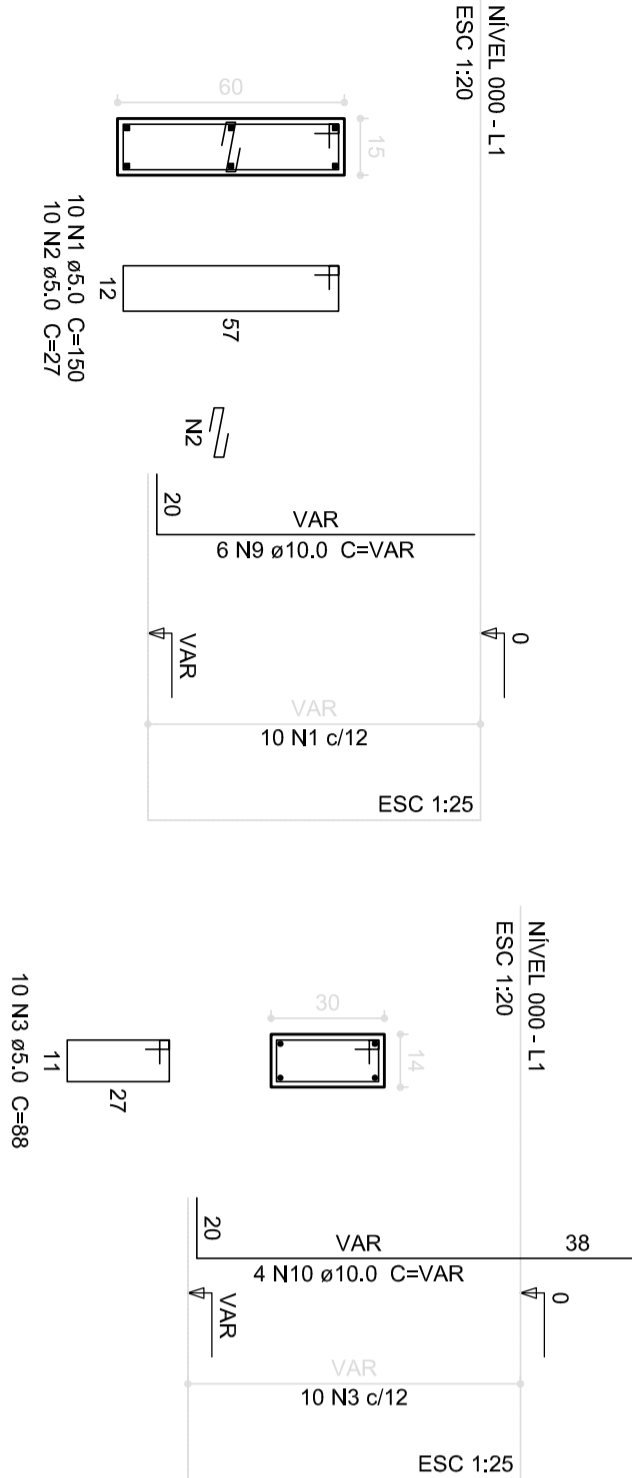


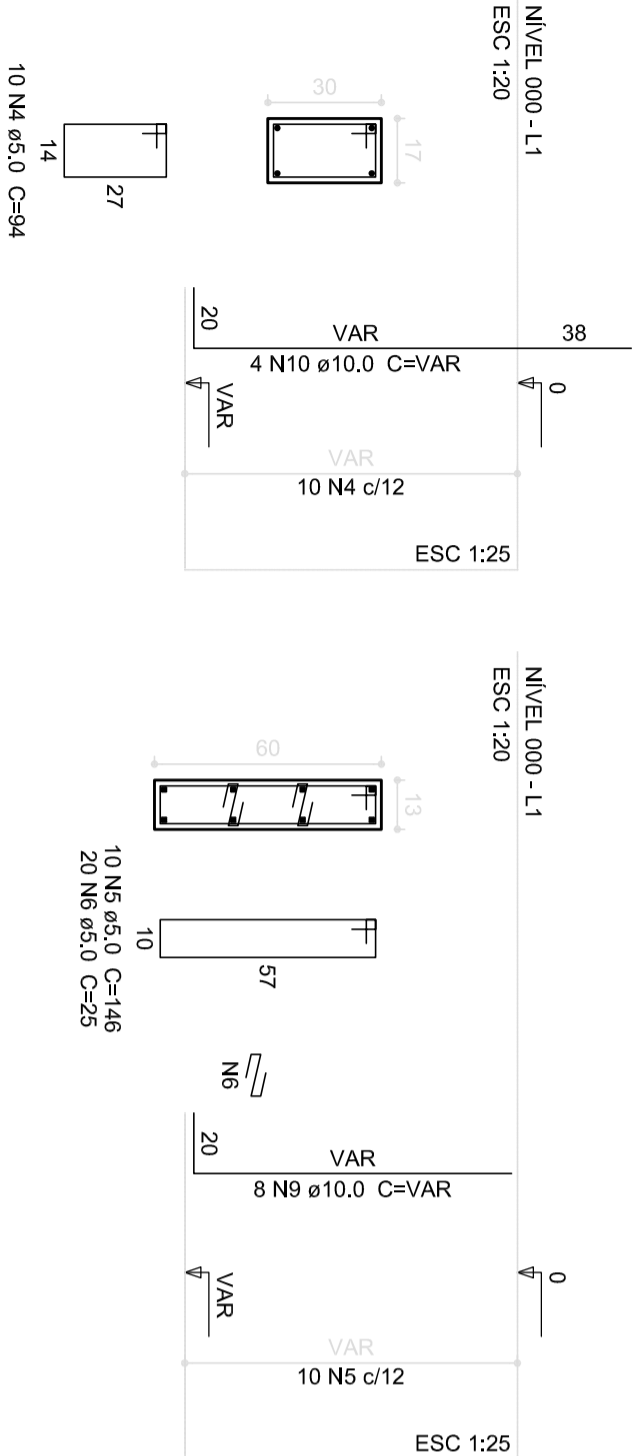
P1=P2=P3=P4=P5=P6=P7=P26=P27=P28=P29
=P30=P31=P32

P10=P22



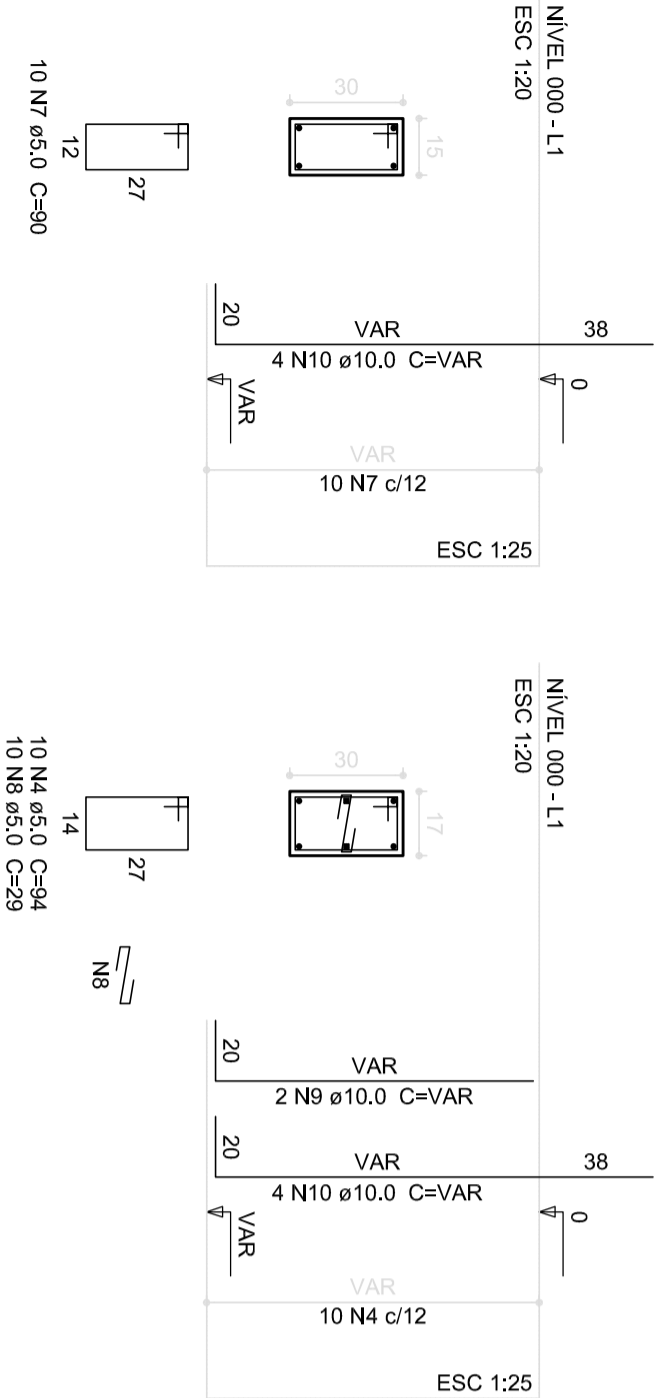
P11=P23=P25

P12=P13=P16=P17=P20=P21



P8=P14=P15=P18=P19=P24

P9



1

PILARES NÍVEL 000

ESCALA 1/25

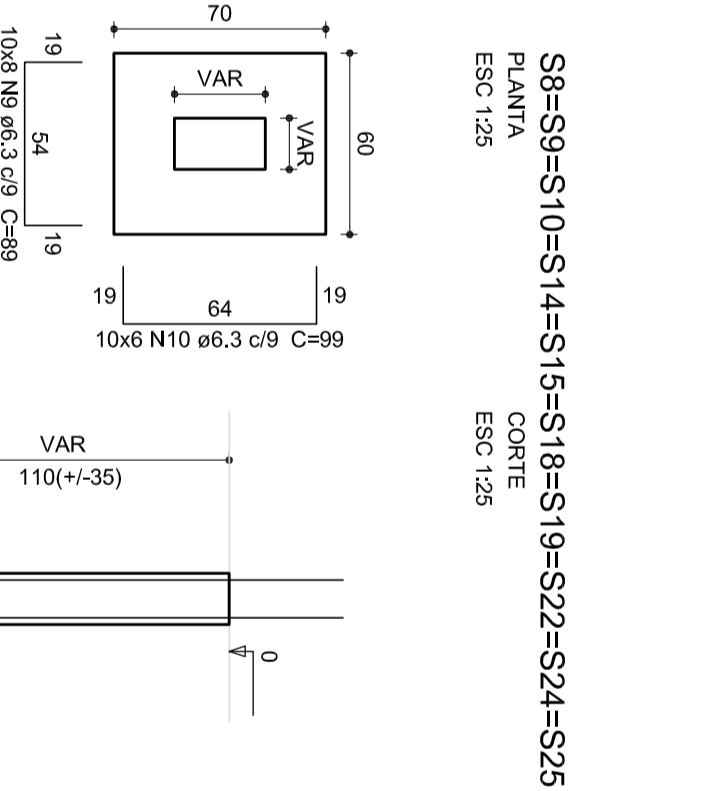
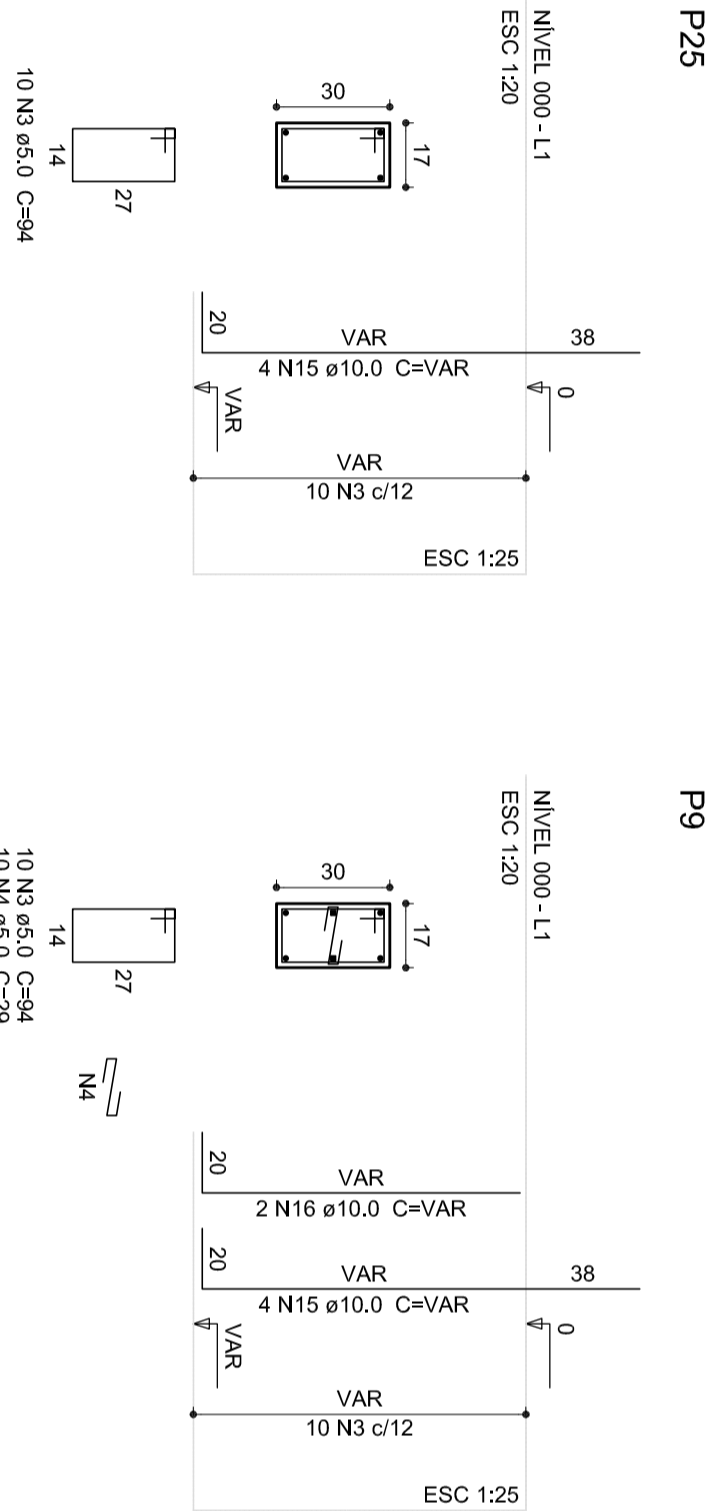
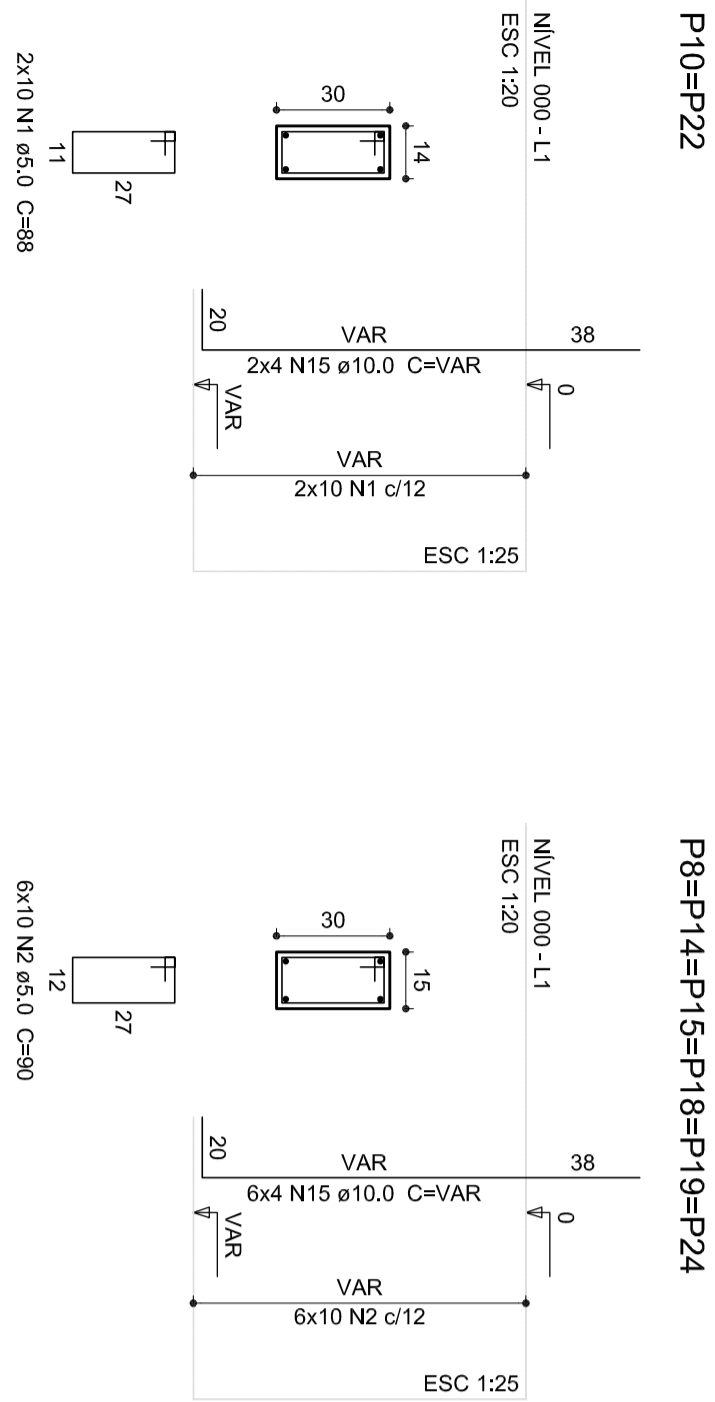
Relação do aço

14xP1		6xP8		6xP12	
2xP10		3xP11		6xP12	
ACO	N	D/AM (mm)	QUANT (Barras)	UNIT (cm)	C.TOTAL (cm)
CA60	1	5,0	140	150	21000
	2	5,0	140	27	3760
	3	5,0	20	88	1760
	4	5,0	40	94	3760
	5	5,0	60	146	8760
	6	5,0	120	25	3000
	7	5,0	60	90	5400
	8	5,0	10	29	290
	9	10,0	134	VAR	VAR
	10	10,0	48	VAR	VAR

Resumo do aço

ACO	D/AM (mm)	C.TOTAL (m)	PESO (kg)
CA50	10,0	243,1	149,8
CA60	5,0	477,5	73,6
PESO TOTAL (kg)			
CA50	149,8		
CA60	73,6		

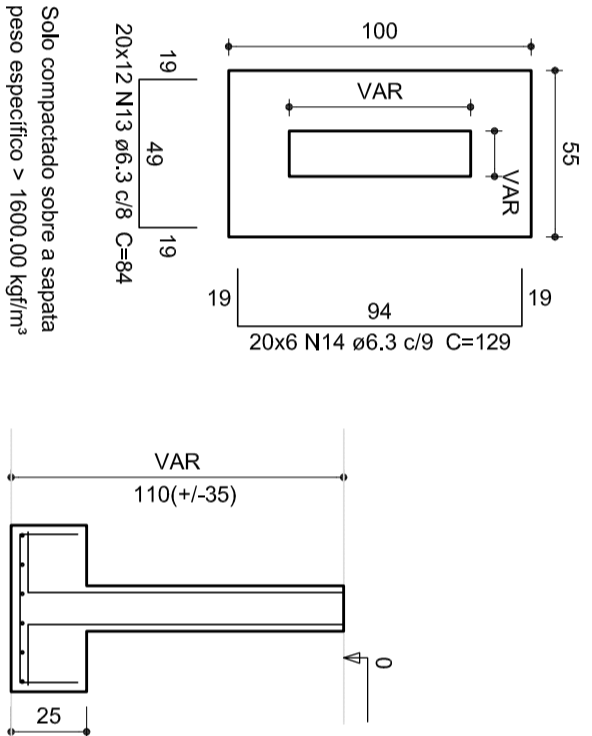
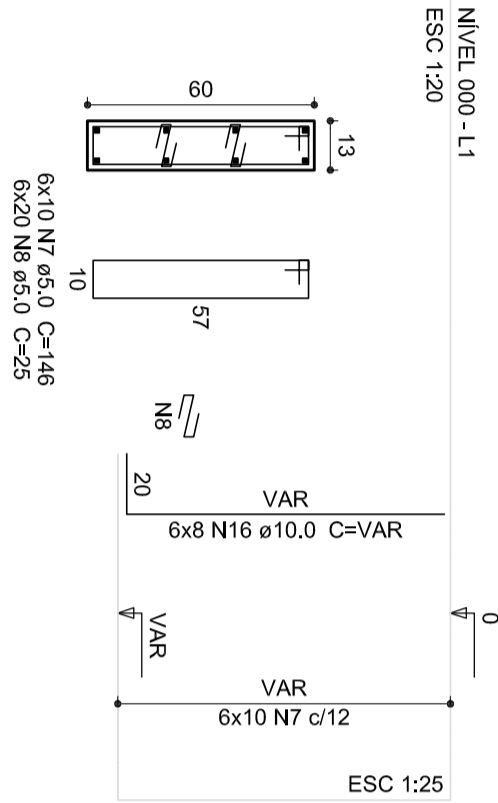
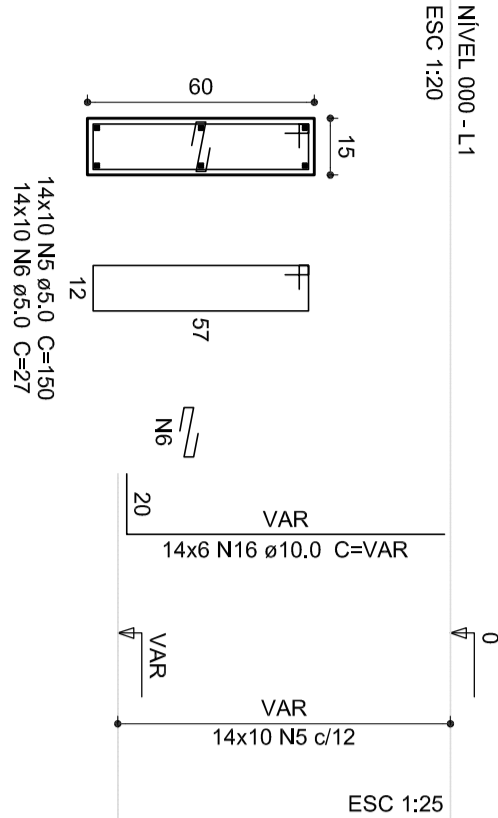
Volume de concreto (C-25) = 2,51 m³
Área de forma = 44,75 m²



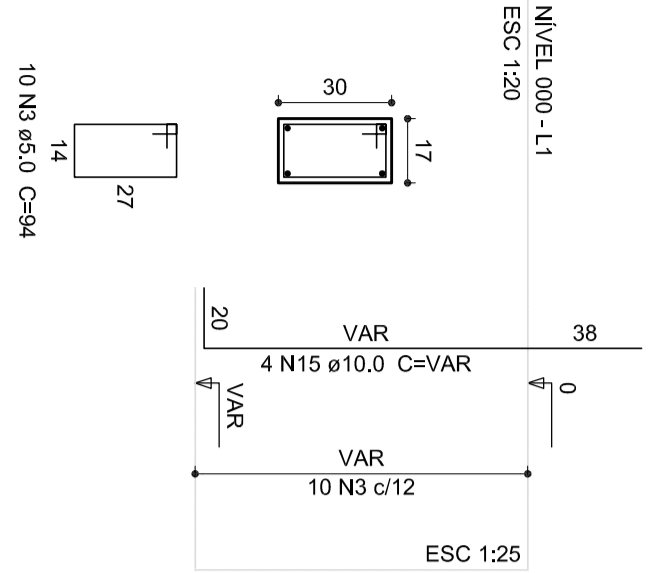
P1=P2=P3=P4=P5=P6=P7=P26=P27=P28=P29
=P30=P31=P32

P12=P13=P16=P17=P20=P21

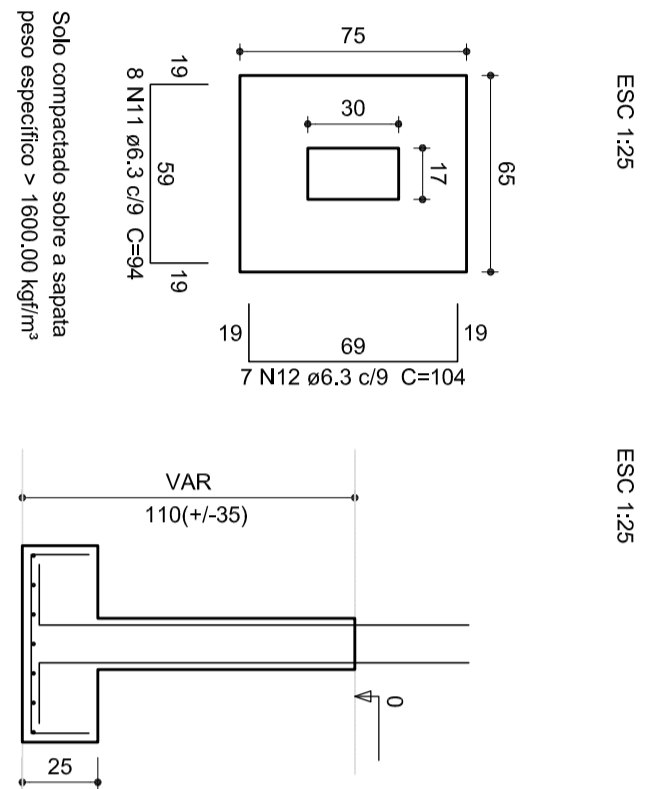
S1=S2=S3=S4=S5=S6=S7=S12=S13=S16=S17
=S20=S21=S26=S27=S28=S29=S30=S31=S32



P11=P23



S11=S23



1 SAPATAS
ESCALA 1/25

Relação do aço

S1		2xS11		S25	
ACO	N	DIAM (mm)	QUANT (Barras)	UNIT (cm)	C.TOTAL (cm)
CA50	1	5.0	20	86	1720
	2	5.0	20	86	1720
	3	5.0	40	94	3760
	4	5.0	10	29	290
	5	5.0	140	150	21000
	6	5.0	140	150	21000
	7	5.0	60	146	8760
	8	5.0	120	25	3000
	9	6.3	80	89	7120
	10	6.3	60	89	5340
CA50	11	6.3	14	104	1456
	12	6.3	240	84	20160
	13	6.3	120	129	15480
	14	6.3	48	VAR	VAR
	15	10.0	154	VAR	VAR
	16	10.0	154	VAR	VAR

Resumo do aço

ACO	DIAM (mm)	C.TOTAL (m)	PESO (kg)
CA50	6.3	516.6	124.6
CA50	10.0	243.1	149.8
CA50	5.0	477.5	73.6
PESO TOTAL (kg)			348.0
CA50	274.4		
CA50	73.6		

Volume de concreto (C-25) = 656 m³
Área de forma = 88.15 m²

<div><div><div><div><div><div></div><div></div></div></div><div><div><div></div><div></div></div></div><div><div><div></div><div></div></div></div><div><div><div></div><div></div></div></div></div></div><div>Ministério da Educação</div><div>FNDE</div><div>Fundo Nacional de Desenvolvimento da Educação</div></div>				<div>PROJETO PADRÃO - FNDE</div>		
MUNICÍPIO – UF:						
PROPRIETÁRIO:						
ENDEREÇO:						
PROPRIETÁRIO						
RESP. TÉCNICO		CREA				
DUFO		CREA				
		RA				
OBSERVAÇÕES:						
QUADRA ESCOLAR COBERTA E VESTIÁRIO						
PROJETO ESTRUTURAL						
COORDENAÇÃO		SAPATAS				
CGEST - Coordenação Geral de Infraestrutura Educacional		SFN				
TÍTULO		PRONÓCIA				
R.00		01/01				
FOLHETO		AT 1841 X 5341				